

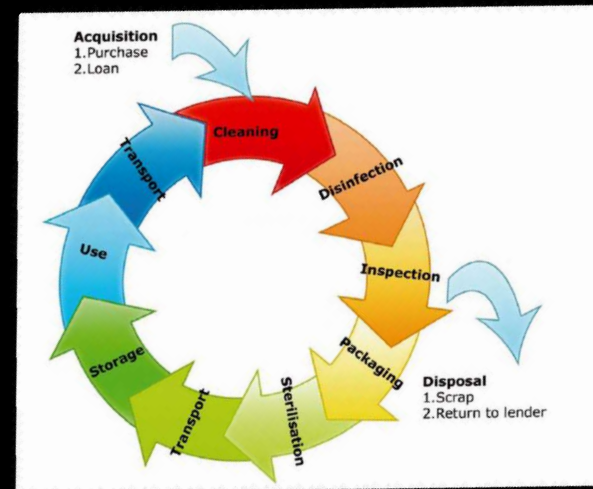
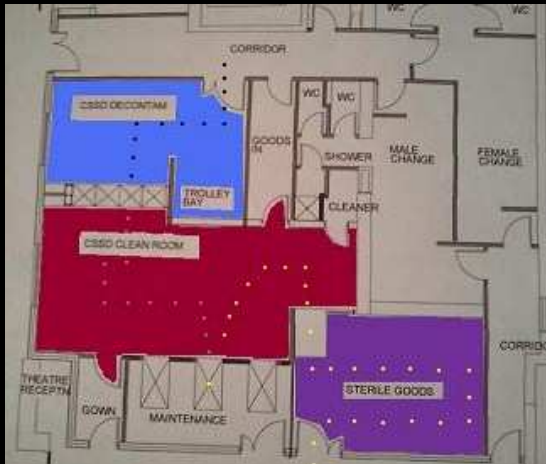
Project 2009



Paul Mc Walter

X00058434

Central Sterile Services Department



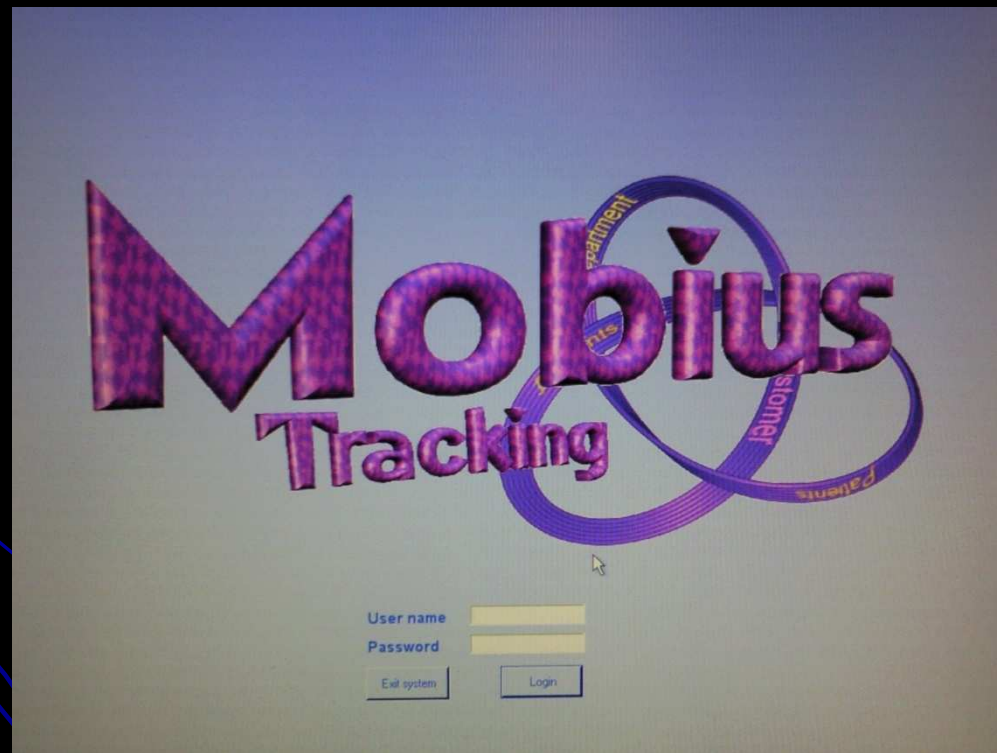
- Assist Operating Theatres with reprocessed RIMD.
- Sterile technicians work mainly inside 2 separate areas Decontamination Room & CleanRoom.
- Reprocessing Cycle has 3 main functions Cleaning, Disinfection & Sterilisation.

Project Aim

- Review Project Plan & HSE code of practice.
- Focusing on 3 sections Traceability, Design & Personal Protective Equipment.
- Collecting Data, Observing & Testing.
- Auditing my workplace.
- Compliant/Non compliant to the HSE Standard

Traceability

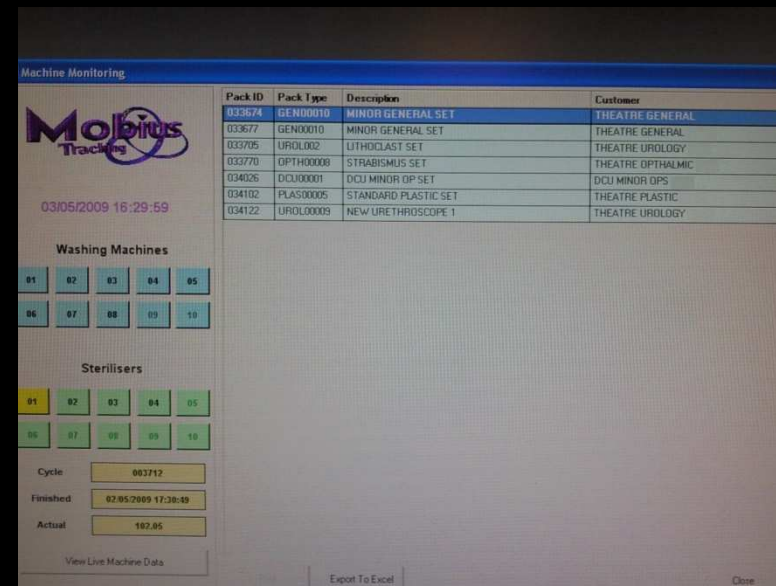
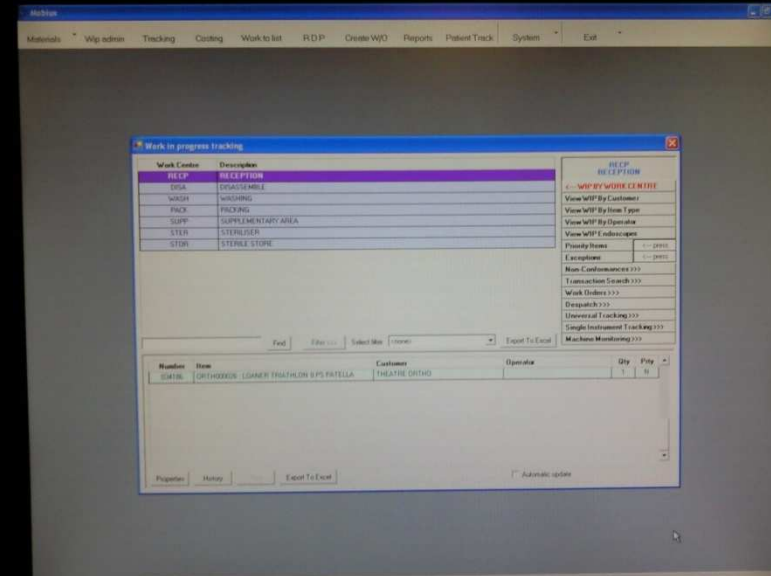
- Manual Traceability
- Electronic Traceability



Tracking software package

On screen functions

- Monitor each stage.
- Work in progress tracking.
- View by operator.
- View by item type.
- Machine monitoring.
- Machine content.
- Machine time remaining.

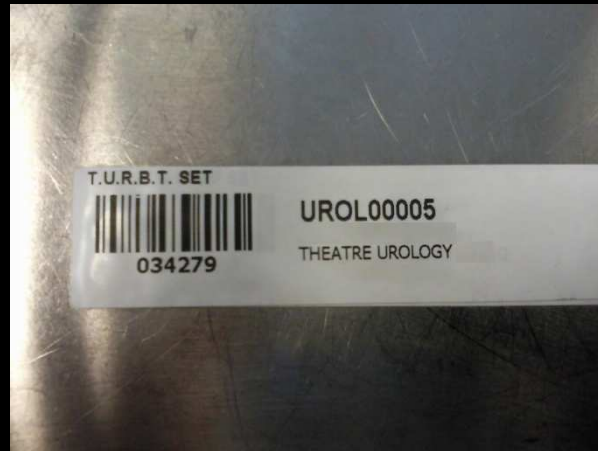


Consists of



Wireless router & 6 Scanners

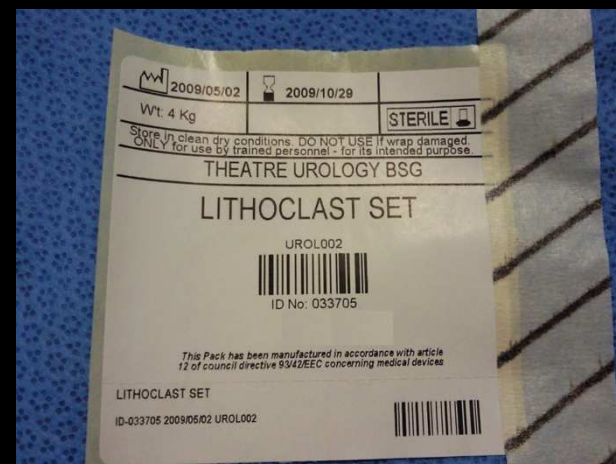
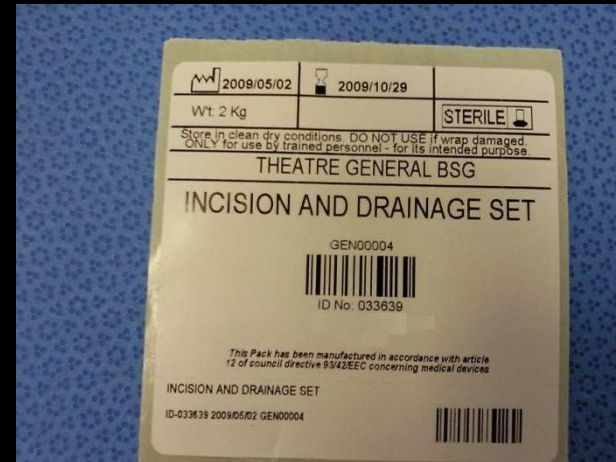
How it works?



- Personal identity badge containing unique barcode.
- Scanners are used to scan user badge & machine barcodes.
- Electronically records ; user name, set name of RIMD, operational function, cycle no's and machine no.
- Prints out instrument list & traceability label.

Traceability labels

- Prints instantly once set is scanned.
- Attaches to patients' chart for direct tracing.
- Carries the sets unique barcode, set name, id no., process date and sterilisation/ expiry date.



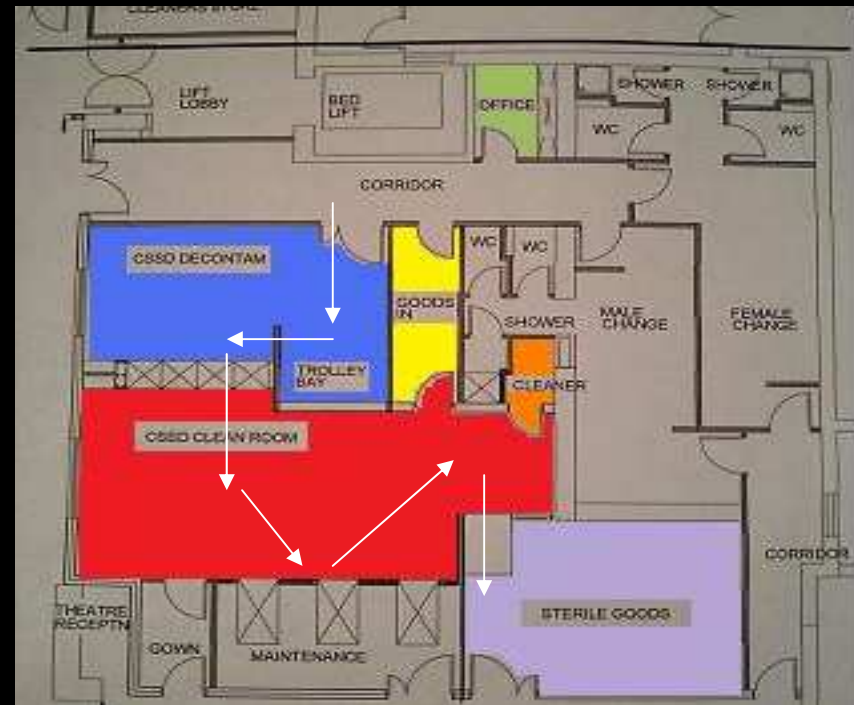
Traceability conclusion

- Tracking of individual RIMD – Manual method
- Plan in place to transfer the individual RIMD onto the electronic tracking system

Both Manual & Electronic Systems are in compliance with HSE code of practice Standard.

Department Design

- Segregation “dirty & clean” activities.
- Unidirectional flow.
- Exclusively used for its intended purpose.
- Independant rooms with single access.
- Changing area located for donning workwear.
- No “opening” windows or hard to clean areas.
- Flush smooth design.
- Cleanroom classified to the ISO 8 Standard and reclassified annually



Decontamination Room Design



- Restricted coded access
- One-way entrance/exit
- Gowning room incorporated within the room.

Gowning area



- Hand-washing station
- Alcohol gel
- PPE station



Workstation design



- 3 x WD's, 1 Pass-through hatch, 2 ultrasonic baths, 3 deep sink/worktop areas.
- Physically divides decontam & Cleanroom.
- Interlocking door mechanism.
- Intercom communication system.
- WD's built with minimal sound output.

Electrical & Lighting



- HVAC System (positive & negative air pressure).
- Hepa Filtration.
- Designed to reduce sound levels – 65.9dBA (limit 87 dBA).
- Permits adequate lighting for inspection of RIMD – 640 Lux (limit 500-700 Lux).
- Task lighting, magnification lamps in operation.
- Sufficient electricity supply points & computer terminal points.
- Temperature controlled between 18-22°Celsius.

Design Conclusion



- Results from this project show design is in compliance with the standard with exception to one area.
- No dedicated gowning room access to the decontam room - There is a gowning area within the room.
- Seperate gown area would need to accommodate transport trolley or seperate RIMD entry.
- Commuication with Management

Personal Protective Equipment

Purpose: Protect the user from contamination/infection & to ensure safe working practices

PPE consist of;

- Theatre work attire/ scrubs – laundered daily
- Theatre hat/cap
- Protective footwear
- Long-sleeved waterproof coat
- Waterproof apron
- Latex gloves
- Face shield/Visor

Training provided to all personnel



HSE Code of Practice for Decontamination of RIMD.

Infection control practices

- Minimises the risk of infection to both patients & Sterile technicians
- Spirigel pump stations
- Hand-washing stations.
- Use of Clinipak solution on “Known infected” RIMD.



PPE Conclusion



- Fluid repellent masks - Not present - Face shield /Visor used.
- Training for sequential donning & glove contact contamination.
- Communication to Management.
- All other items outlined in the HSE code of practice in relation to PPE are in compliance within the workplace.

Project Conclusion

- Completed Review of Project Plan & HSE code of practice.
- Audited 3 sections: Traceability, Design & PPE.
- Collected Data, Observed & carried out Testing.
- Proved Compliant/Non compliant status to the HSE Standard

Thank you

